

GENERAL CHARACTERISTICS

Mechanical Flow Indicator for liquids, with a rotor for quantitative flow indication in a special tube-shaped glass housing. A signal-red rotor provides a directly flow-proportional indication of the momentary flow-rate. Rugged design in brass or stainless steel.

- * cleaning mechanism of the internal surface of the glass
- * visibility of rotor 360°
- * floating bearing for liquids
- * grease-free ball bearing for gaseous media

Female thread G1/4 to G1 1/2 brass/stainless steel

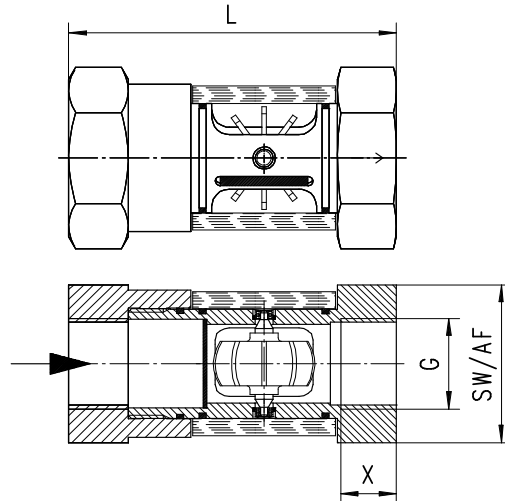


TECHNICAL DATA

WR1-015GK

| G | Type | Qmax. recom. l/min H ₂ O | start of rotor l/min | | | L mm | SW mm | X mm | weight kg |
|---------|-----------|--|----------------------|-----------------------|---------------------------|---------|----------|---------|--------------|
| | | | H ₂ O | 40 mm ² /s | 41-150 mm ² /s | | | | |
| G 1/4 | WR1-008G. | 4 | 0.7 | 1.5 | 2.7 | 71 | 36 | 9 | 0.35 |
| G 3/8 | WR1-010G. | 8 | 0.8 | 1.5 | 2.8 | 71 | 36 | 9 | 0.35 |
| G 1/2 | WR1-015G. | 12 | 1.4 | 1.8 | 3.2 | 86 | 46 | 13 | 0.65 |
| G 3/4 | WR1-020G. | 25 | 1.4 | 2.7 | 5.9 | 94 | 46 | 16 | 0.65 |
| G 1 | WR1-025G. | 40 | 1.7 | 3.0 | 7.0 | 104 | 46 | 16 | 0.65 |
| G 1 1/4 | WR1-032G. | 80 | 8.0 | 5.9 | 7.9 | 120 | 65 | 19 | 1.60 |
| G 1 1/2 | WR1-040G. | 100 | 8.0 | 7.3 | 7.9 | 130 | 65 | 20 | 1.70 |

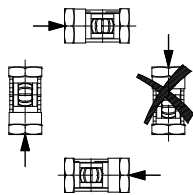
pressure PN 16
media temperature max. 100°C
average pressure loss 0.25 bar at Qmax.



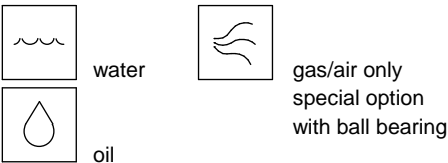
MATERIALS

| | WR1-...GM | WR1-...GK |
|---------|---|---|
| housing | brass Ms58 nickel plat. | stainless steel 1.4305 |
| rotor | DN 8-25 POM red DN 32-40 nylon white | DN 8-25 POM red DN 32-40 nylon white |
| tube | borosilicate glass | borosilicate glass |
| axle | stainless steel 1.4541 | stainless steel 1.4541 |
| bearing | PEEK | PEEK |
| wiper | NBR | viton |
| seal | NBR | viton |

MOUNTING POSITION



METERING SUBSTANCES



With higher viscosity instruments tend to higher starting values of the rotor.

NOMENCLATURE

| WR1- | 008 | G | M | W | Beispiel |
|------------------|-----|---|---|---|--------------------------|
| | 008 | | | | ● nominal diameter |
| | 010 | | | | ● DN 8 - G1/4 |
| | 015 | | | | ● DN 10 - G3/8 |
| | 020 | | | | ● DN 15 - G1/2 |
| | 025 | | | | ● DN 20 - G3/4 |
| | 032 | | | | ● DN 25 - G1 |
| | 040 | | | | ● DN 32 - G1 1/4 |
| | | G | | | ● DN 40 - G1 1/2 |
| | | | M | | ● female thread |
| | | | K | | ● brass design |
| | | | | W | ● stainless steel design |
| | | | | G | ● liquids |
| | | | | □ | ● air/gasses |
| | | | | ○ | ● seal / wiper EPDM |
| Programme option | | | | | |
| BASIC | | | | | |
| Special option | | | | | |
| VARIO | | | | | □ low flow rates |

All technical changes reserved

●BASIC Standard ○BASIC Programme option □VARIO Special option ⊕PLUS Accessories ✗not recommendable

GENERAL CHARACTERISTICS

Mechanical Flow Indicator for gaseous media, with a rotor for quantitative flow indication in a special tube-shaped glass housing. A signal-red rotor provides a directly flow-proportional indication of the momentary flow-rate. Rugged design in brass or stainless steel.

- * cleaning mechanism of the internal surface of the glass
- * visibility of rotor 360°
- * grease-free ball bearing

Female thread G1/4 to G1 1/2 brass/stainless steel

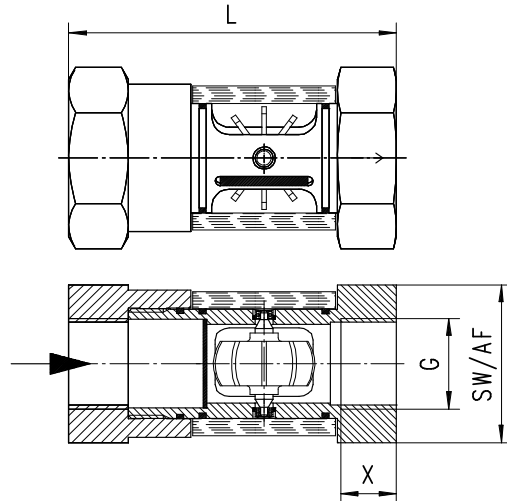


TECHNICAL DATA

WR1-015GKG

| G | Type | Qmax. recom. l/min 1bar abs | start of rotor l/min 1 bar abs | L mm | SW mm | X mm | weight kg |
|---------|-----------|--------------------------------|-----------------------------------|---------|----------|---------|--------------|
| G 1/4 | WR1-008G. | 60 | 18 | 71 | 36 | 9 | 0.35 |
| G 3/8 | WR1-010G. | 150 | 20 | 71 | 36 | 9 | 0.35 |
| G 1/2 | WR1-015G. | 250 | 25 | 86 | 46 | 13 | 0.65 |
| G 3/4 | WR1-020G. | 250 | 25 | 94 | 46 | 16 | 0.65 |
| G 1 | WR1-025G. | 350 | 35 | 104 | 46 | 16 | 0.65 |
| G 1 1/4 | WR1-032G. | 600 | 60 | 120 | 65 | 19 | 1.60 |
| G 1 1/2 | WR1-040G. | 700 | 70 | 130 | 65 | 20 | 1.70 |

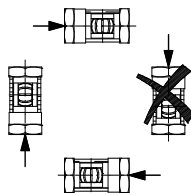
pressure PN 16
media temperature max. 100°C
average pressure loss 0.25 bar at Qmax.



MATERIALS

| | WR1-...GM | WR1-...GK |
|--------------|---|---|
| housing | brass Ms58 nickel plat. | stainless steel 1.4305 |
| rotor | DN 8-25 POM red DN 32-40 nylon white | DN 8-25 POM red DN 32-40 nylon white |
| tube | borosilicate glass | borosilicate glass |
| axle | stainless steel 1.4541 | stainless steel 1.4541 |
| ball bearing | chrome-plated steel 100 CR 6 | chrome-plated steel 100 CR 6 |
| wiper | NBR | viton |
| seal | NBR | viton |

MOUNTING POSITION



METERING SUBSTANCES



NOMENCLATURE

| WR1- | 008 | G | M | G | Beispiel Beschreibung |
|------------------|-----|---|---|-----|--------------------------|
| | 008 | | | ● | DN 8 - G1/4 |
| | 010 | | | ● | DN 10 - G3/8 |
| | 015 | | | ● | DN 15 - G1/2 |
| | 020 | | | ● | DN 20 - G3/4 |
| | 025 | | | ● | DN 25 - G1 |
| | 032 | | | ● | DN 32 - G1 1/4 |
| | 040 | | | ● | DN 40 - G1 1/2 |
| | | G | | ● | female thread |
| | | | M | ● | brass design |
| | | | K | ● | stainless steel design |
| | | | | G □ | air/gasses |
| | | | | ○ | seal / wiper EPDM |
| Programme option | | | | | |
| BASIC | | | | | |
| Special option | | | | | |
| VARIO | | | | □ | low flow rates |

All technical changes reserved

●BASIC Standard ○BASIC Programme option □VARIO Special option ⊕ PLUS Accessories ✗ not recommendable